

## SPRAY CHARACTERISTICS

- Flat, high impact spray pattern.

## CONSTRUCTION AND MATERIALS

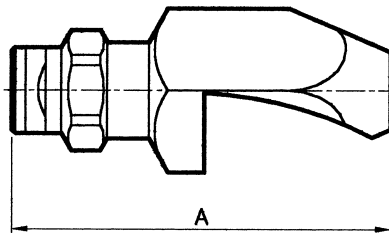
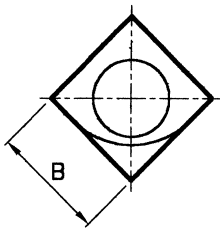
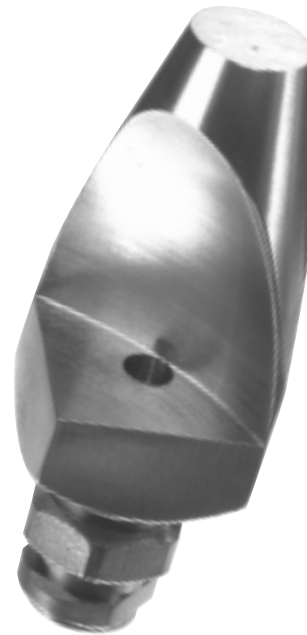
- Circular orifice with tapered inlet to reduce plugging.
- Maximum impact for any given pressure due to deflector design.
- Available in Brass and 316 Stainless Steel.

## ORDER EXAMPLE

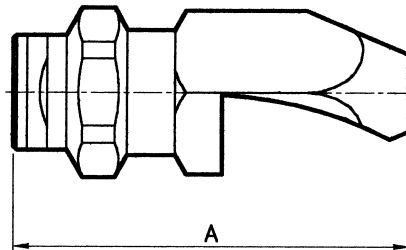
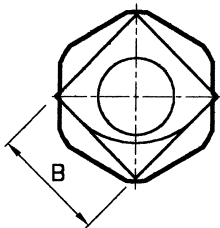
DFTJ 50-40° Brass.

### DIMENSIONS (mm)

Nozzle Size	A	B Sq
DFTJ 10	31,0	15,9
DFTJ 20-40	73,0	25,4
DFTJ 50-60	72,2	25,4
DFTJ 80-100	88,9	31,8



DFTJ STANDARD



DFTJ LARGE

## CAPACITY CHART

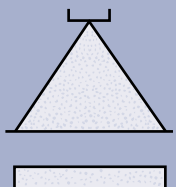
NOZZLE NUMBER	BODY SIZE*		SPRAY ANGLES (°)			FLOW RATE IN LITRES/MIN AT Bar.G.						
	S	L	35	40	50	1	1,5	2	3	4	5	7
DFTJ 10						2,3	2,25	3,2	3,9	4,5	5,0	6,00
DFTJ 20						4,5	5,5	6,4	7,8	9,0	10,0	11,9
DFTJ 25						5,6	6,9	8,0	9,8	11,3	12,6	14,9
DFTJ 30						6,8	8,30	9,6	11,7	13,5	15,1	17,9
DFTJ 40						9,0	11,0	12,8	15,6	18,0	20,0	24,0
DFTJ 50						11,3	14,0	16,0	19,5	23,0	25	30,0
DFTJ 60						13,5	16,5	19,2	23	27	30	36,00
DFTJ 80						18,1	22,0	26	31	36	40	48,00
DFTJ 100						23,0	27,5	32	39	45	50	60,00

\* S = for use with 1/4" or 3/8" Dela-Fit Bodies. L = for use with 1/2" Dela-Fit Bodies.

DELA-FIT

TYPE DFTJ

Contact our Helpline for any special requirements:  
Tel: +44 (0) 151 424 6821  
Fax: +44 (0) 151 495 1043  
e-mail: sales@delavan.co.uk  
Web: www.delavan.co.uk



DF